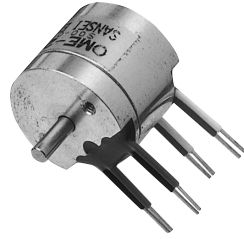


MINIATURE TYPE

OME-T Model



Miniature Model

- It is Possible to Align The Electric Zero with.
- Micro Encofer 18mm / Shaftdia : 2.5mm.

Model

OME- **-** **T**

Resolution

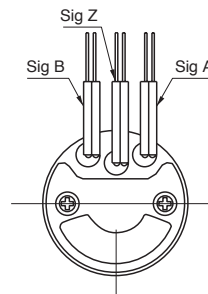
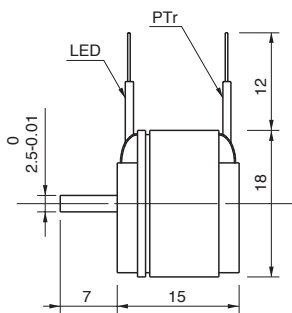
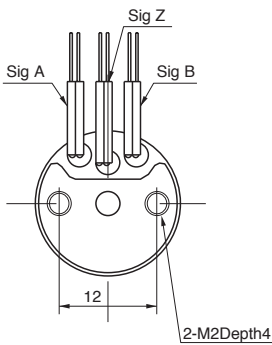
Signals

- 1: 1 Single
- 2 : AB90° Phase Difference
- 2M: AB90° Phase Difference + Zero Signal

NOTE) Output Mode is Sine Wave Signal

100	100 P/R	256	256 P/R
200	200 P/R	300	300 P/R
250	250 P/R	360	360 P/R

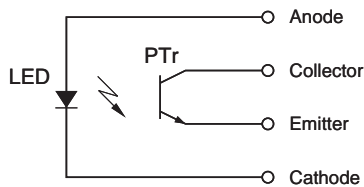
External Dimension



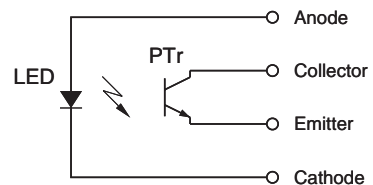
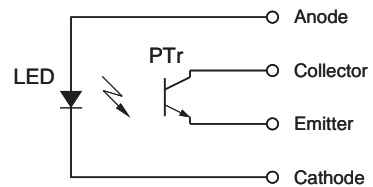
Install Without Stress on Wires.

Circuit of Output Signal

1T



2T



Electrical Spec.

TYPE	1T	2T	2MT
LED Current	IF = 26 mA Max		
Maximum Frequency Response	10 KHz		
Output Signal Amplitude	150 mVp-p or More		
Output Amplitude Variation	40 % Max		

Electrical Connections

Color of Lead Wire	Description
Red	Anode
Black	Cathode
Blue	Collector
White	Emitter

Max. Rating of Electronic Elements

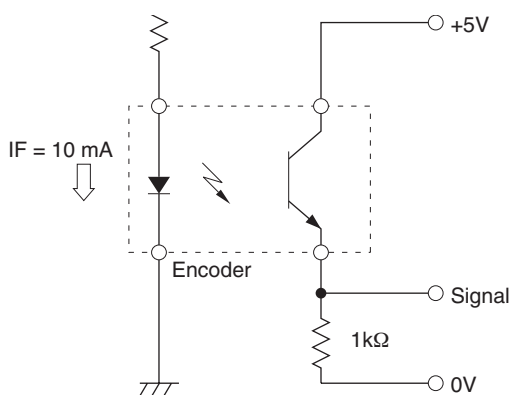
LED Light Emitting Diode

Max. Current Flow	IF ; 60 mA
Reverse Voltage	VR ; 4 V
Derate(25 to 70°C)	- 1.73 mW / °C

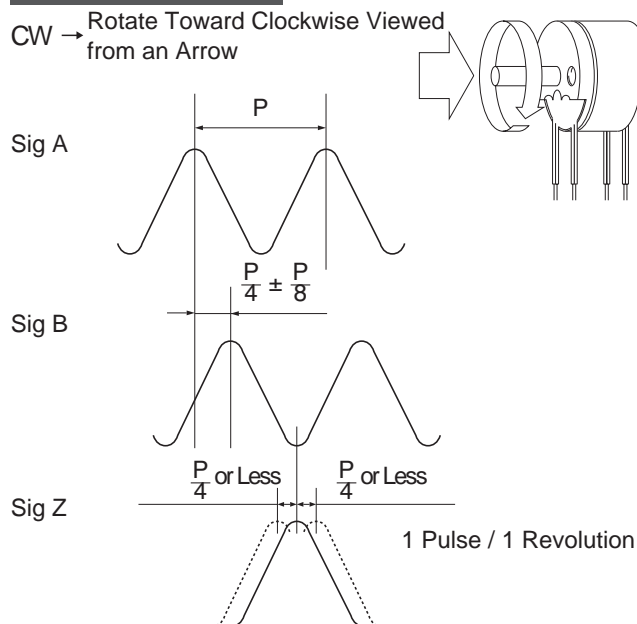
PT_r Photo Transistor

Collector-Emitter Voltage	V _{CEO} ; 20 V
Emitter-Collector Voltage	V _{ECO} ; 5 V
Collector Current	I _c ; 20 mA
Collector Power Dissipation	P _c ; 75 mW
Derate(25 to 75°C)	- 1.0 mW / °C

Test Circuit



Wave Form.



Mechanical Spec.

Starting Torque	4.9×10 ⁻⁴ N · m Max	
Shaft Loading	Thrust axial	1.96N
	Radial	1.96N
Moment of Inertia	1×10 ⁻⁸ kg · m ²	
Maximum RPM	6000r/min	
Net Weight	25g Max	

Environmental Spec.

Operating Temperature	0°C ~ +50°C
Storage Temperature	- 20°C ~ +80°C
Humidity	RH 85% Max No Condensation
Vibration	10~50 Hz / 1.5mm 2 h
Shock	294m/s ² , 11ms X, Y, Z Each 3 times
Degree of Protection	IP50