

MANUAL TYPE

# UFO-M2

Model

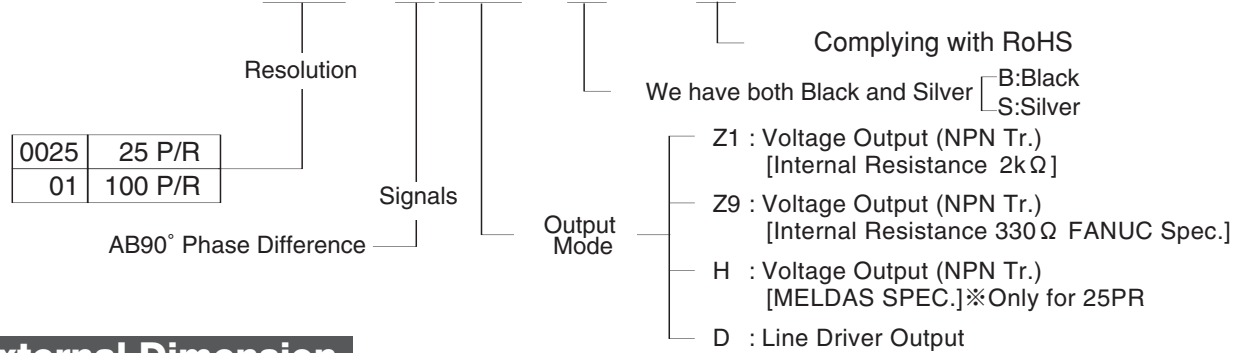


## Compact & Very Thin

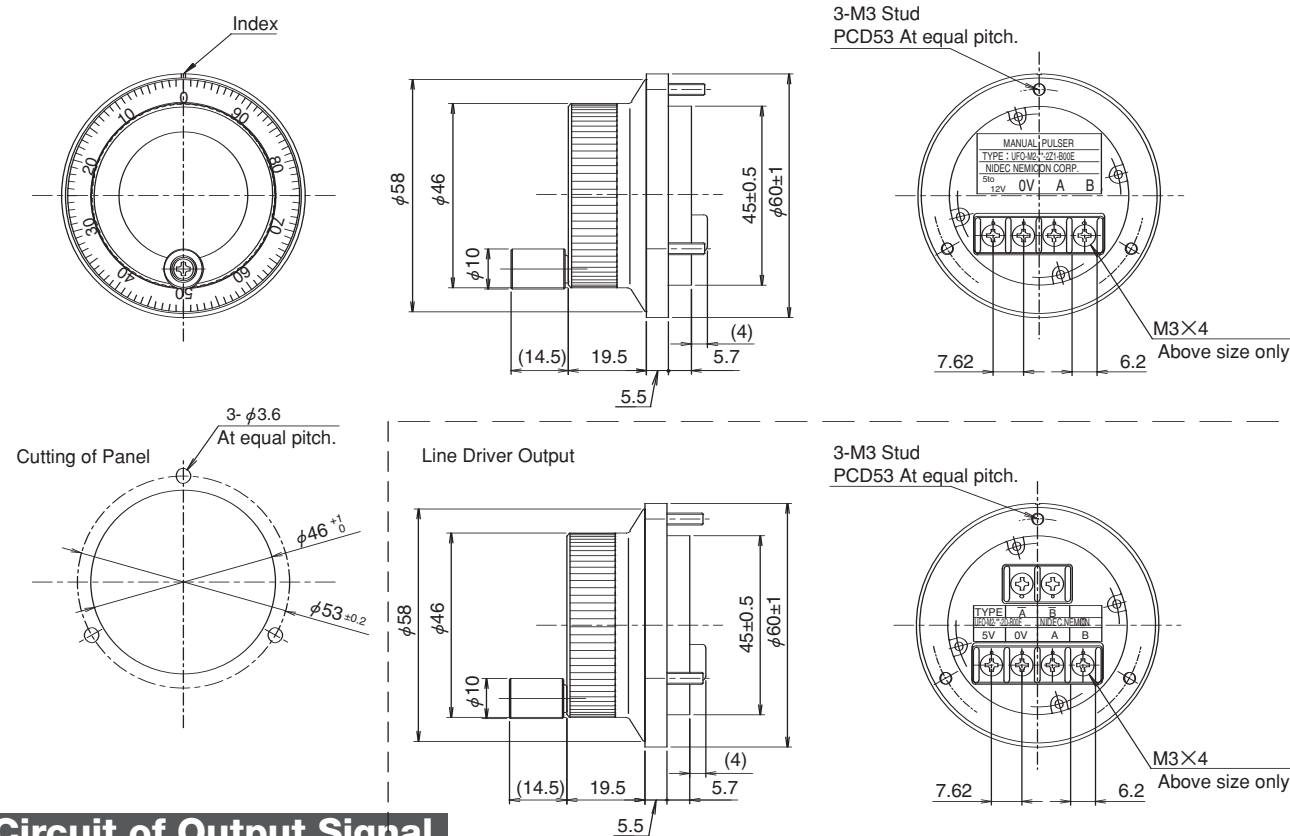
- Optical Slot Mode.
- Click Mechanism.

### Model

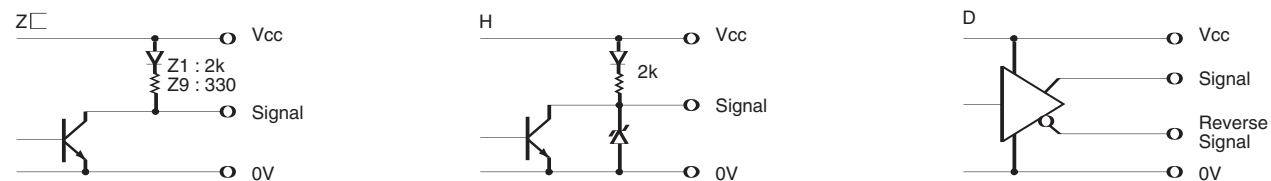
# UFO-M2-□□-2□□-B00E



### External Dimension



### Circuit of Output Signal

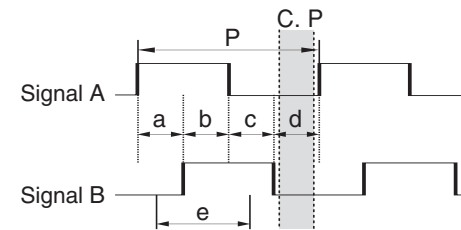


### Electrical Spec.

TYPE	Z1	Z9	H	D
Supply Voltage	DC+4.5V ~ +13.2V	DC+5V±10%	DC+12V±10%	DC+5V±5%
Requirement	50 mA Max	70 mA Max	50 mA Max	100 mA Max
Pulse Par a Revolution	100P/R · 25P/R		25P/R	100P/R · 25P/R
Output Voltage	"H"	Within -1 Power Volt		+5V±10%
	"L" ※1	0.5 V Max		
Maximum Frequency Response ※2	5 kHz			
Rise & Fall Time	1 μs Max		1.5 μs Max	200 ns Max
Maximum Output Current	20 mA MAX			

※1) at Maximum Output Current ※2) Without Click Mechanism

### 2Z□ · H



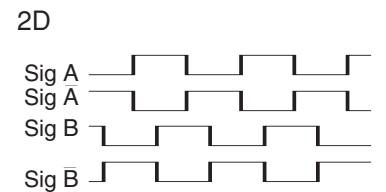
$$P = \frac{1}{1 \text{ Resolution}}$$

$$a, b, c, d = \frac{P}{4} \pm \frac{P}{6}$$

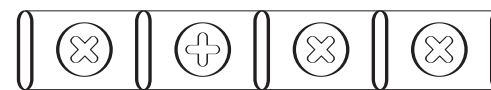
Wave Ratio (Duty); 50 ± 25 (%)

C.P=Click points

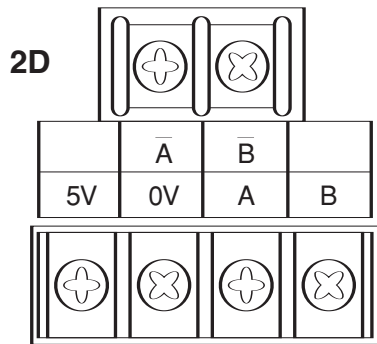
For mode 25P/R click point is at each position of a,b,c,d.  
※Point "e" is recommended as the system switching timing.



2



2D



### Mechanical Spec.

Starting Torque	6.8×10 <sup>-3</sup> N·m~2.9×10 <sup>-2</sup> N·m	
Shaft Loading ※1	Thrust axial	9.8N
	Radial	19.6N
Moment of Inertia	600r/min (Maximum) 200r/min (Continuous)	
Rotational Life	1 Mln.rev.min. (200r/mim)	
Net Weight	200g Max	

### Environmental Spec.

Operating Temperature	-10°C ~ +60°C
Storage Temperature	-20°C ~ +70°C
Humidity	RH 85% Max No Condensation
Vibration	10 ~ 55 Hz / 1.5mm 2 h
Shock	490m/s <sup>2</sup> , 11ms X, Y, Z Each 3 times